

- ZERO upward light pollution
- High elevation peak beam angle for outstanding area coverage relative to mounting height
- High beam efficiency with low glare
- Corrosion-resistant and fire-retardant GRP moulded body - light grey finish
- Clear toughened/safety glass cover
- Aluminium heat sink ensures cool running of control gear for optimum life in high ambient temperatures
- Pole top or wall mounted versions
- Photocell option
- Fitted with lamp



IP65    

WINDAGE - 0.10m²

Range

LAMP	MANUFACTURER	WALL MOUNTED VERSION	APPROX. kg	POLE TOP VERSION	APPROX. kg
High pressure sodium lamps					
150W SON-T	Any	STG 10912	10.3	STG 11000	10.5
250W SON-T	Any	STG 10913	10.8	STG 11001	11.0
Metal halide lamps - compatible with high pressure sodium control gear					
150W MBI-T+	Any	STG 10909	10.3	STG 10997	10.5
250W MBI-T+	Any	STG 10910	10.8	STG 10998	11.0
Metal halide lamps - compatible with mercury (MBF) control gear and semi-parallel ignitor					
250W MBI-T▲	Any	STG 10911	10.1	STG 10999	10.3
Compact fluorescent lamps					
42W TC-T■	Any	STG 13428J	7.1	STG 13426J	7.3
57W TC-T■	Any	STG 13429J	7.1	STG 13427J	7.3

+ Venture Whitelux 4000K fitted

▲ Philips HPIT Plus 4500K fitted

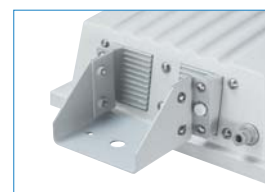
■ 4000K lamp fitted

IMPORTANT: SON LAMPS WITH INTERNAL STARTERS ARE NOT RECOMMENDED.

NOTE: POLE TOP VERSIONS - MOUNTING POTS OR CROSSARMS ARE REQUIRED FOR THIS FITTING AND MUST BE ORDERED SEPARATELY - SEE PAGE 20 FOR DETAILS



Wall Mounting Bracket

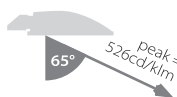
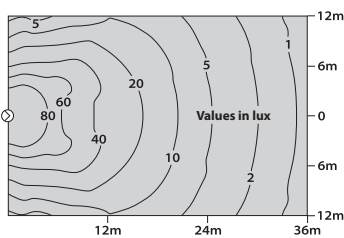
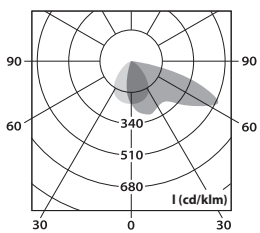


Pole Top Mounting Bracket



Photometric Guide

250W SON-T 28000lm 8 metre high



Options

DESCRIPTION	SUFFIX
Photocell	PC

e.g. STG 10912PC etc

Poles and Adaptors - see page 20

